

Accommodation

Our **Cosalt Rimini** Mobile Home is a 32' x 12' 6-Berth. Inside there is a double bedroom and a twin bedroom and a pull-out double bed in the lounge. There is a spacious lounge area and a kitchen/diner.



Rimini



Outside it has a large semi-covered decking with stunning views towards the village of Couterne.

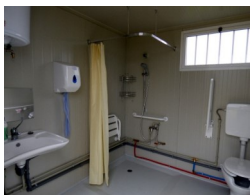
Our other Mobile Home is a **BK Bluebird** 4-berth. It's equipped with a double bedroom and a twin room together with a combined kitchen/living area.

If you prefer to bring your own caravan, tent or camping-car, we have **4 large flat pitches**, all with **6-amp** electric hook-ups.



BK Bluebird

There is a fully-equipped toilet / shower with access for persons



with reduced mobility. Awnings are welcomed with breathable groundsheets. Dogs are permitted on *touring pitches only* and there are dog walks off-site.

A 10 minute walk will take you to the village with its bakers, butchers, convenience store, newsagents, etc.

On your return to site, there are various seating areas where you can admire the 360-deg views, observe the wildlife or simply relax on the mobile home terrace, the Sans Souci barn, enjoy a BBQ and a glass of wine or beer or simply watch one of our splendid sunsets.



Take a glance inside the brochure to see what wonders await in our little part of France, we think you will be surprised !

Why not give us a look ???

TARIFFS

For current tariffs **and** to make a booking, please see our website

www.campinglapattedoie.com

Also available on our Facebook page

SORRY NO DOGS in the Accommodation units

LOW SEASON : April - June / Sept - Oct

HIGH SEASON : July & August



Updated: Jul 2022



Countryside Camping



Château de Couterne



Situated on the border of the Orne region of Normandy and the Mayenne region of Pays de la Loire.

Check out our website for full details.

Tel: - +33 2 33 64 26 37

Email: info@campinglapattedoie.com

[Pays de la Loire - at a glance - all within 50kms](#)

Lassay-les-Châteaux - The first mention of a *castrum* in Lassay dates back to the 12th century. Owned by Charles de Vendôme at the beginning of the 15th century, the castle was destroyed by French troops since Charles de Vendôme was supporting the English during the Hundred Years War. In 1458 the French king, Charles VII, allowed the son of Charles de Vendôme, Jean II, to rebuild a castle.



The new castle was built within one year. The barbican was built in 1497-1498. Since then the castle has been left mainly intact and the original 15th-century architecture preserved by the different owners of the castle.



Mayenne - Despite being besieged twice during the 16th century and suffering substantial damage Mayenne was rebuilt but then suffered from plague in 1707. On 9th June 1944, during World War II, it was bombed by English planes, which caused heavy damage and many casualties. The Château, built in the eleventh century, has vaulted rooms and a chapel. Once used as a prison; since 2008 it is home to a museum. The Basilica of Notre-Dame, founded in 1100, is also worth a visit.



Jublains - A former site of Roman occupation (called Noviodunum). Look out for the theatre, thermal baths, temple and the fortress. Re-enactments are often held at the site.



Saint-Cénéri-le-Gérei - Beautiful village set in Les Alpes Mancelles adorned by many pre-impressionist landscape artists.

Alençon - It can be traced back to the uprising against William the Conqueror (Duke of Normandy) and is also the birthplace of Saint Thérèse of Lisieux.

Sille Plage - In the forest, near to Sille-le-Guillaume, a lake with swimming, pedal boats, sailing, canoeing, fishing; and climbing sites, hiking, mountain-biking or horse-riding.



[Normandy - at a glance - all within 50kms](#)

Château de Couterne - Although the Chateau is not accessible, the exhibition of life and items discovered during renovations is worth seeing.

Bagnoles-de-l'Orne - A beautiful spa town with relaxing hot spring baths, and full leisure facilities including swimming pool, tennis courts, crazy golf, cycle routes and lake with surrounding park where you can hire pedaloes and row boats. There is also a 9-hole golf course nearby. On a former Railway line with a very gentle gradient, you can enjoy a trip by Vélo Rail crossing the magnificent Forest d'Andaines.



La Michaudière - Bocage Normand farm (based in Juvigny-sous-Andaine). Visit and meet the horses and stay for the show and comical display in the afternoon.

La Ferté Macé - A man-made beach with sailing, windsurfing, optimist boats, fishing, electric boats, pedaloes, kayaking, horse

-riding, climbing wall, mini-golf, go-kart, 4-person bikes, a picnic area and restaurant. There is an 18-hole wooded golf course and an indoor swimming pool with spa area.



Domfront - A medieval town with castle ruins and ancient streets. It has street markets and local bazaars and many tiny craft shops.

Falaise - Birthplace of William the Conqueror and where the Treaty of Falaise was signed at the castle in December 1174 between the captive William I and King of England, Henry II. In modern times it is known for the WWII battle the "Falaise Pocket" during the Allied conquest of France (called Operation Overlord) in August 1944 in which two German armies were encircled and destroyed by the Allied armies. Two-thirds of Falaise was destroyed by Allied bombing and was largely restored after the war (all told in the Museum of the Second World War).



La Suisse Normande - "Norman Switzerland" is not a mountainous area but a delightful, steep, wildish stretch around the Orne Valley. There are boats and hiking or climb up the rock-face and return on the zip-wire. Marvel at the gorges

from one of the many gorgeous riverside restaurant terraces.

All of the above are within an hour of our campsite however there are many other magnificent places to visit slightly further afield. Visit our website to discover these and to see what local events are happening near us during your intended stay.

www.campinglapattedoie.com